

# Welcome to Long Beach Harbor

ARRIVAL AND INFORMATION GUIDE







## TABLE OF CONTENTS

WELCOME TO OUR HARBOR	2
RATES	4
ON-SITE AMENITIES	4
CONTACT	5
MEET THE CREW	5
MARINE SERVICES	6
NEARBY ATTRACTIONS	7
IMPORTANT NUMBERS	8
MARINA MAP	9
CHARTER LISTING	10

## WELCOME TO LONG BEACH HARBOR

Long Beach Harbor boasts some of the most beautiful scenery along the Gulf Coast offering direct access to the Mississippi Sound.

This sleepy southern getaway offers a unique and refreshing alternative to the hustle and bustle offered at nearby Biloxi and Gulfport Harbors. Our amenities continue to be updated to provide the latest in comfort and convenience. We offer a wide array of restaurants and businesses located within walking distance from the harbor pier to fulfill! Feel free to contact our harbormaster or crew for any assistance you may need!

We look forward to your visit!

**Harbormaster:** *Bill Angley*





## RATES

**Harrison County Resident**  
\$3.50 per foot/month

**Mississippi State Resident**  
\$4.20 per foot/month

**Out of State Resident**  
\$6.30 per foot/month

**Live Aboard**  
\$7.00 per foot/month

**Utilities, Water and Trash**  
\$30.00 per month (30amps)

**Air Conditioning Charge**  
\$25.00 per AC/month

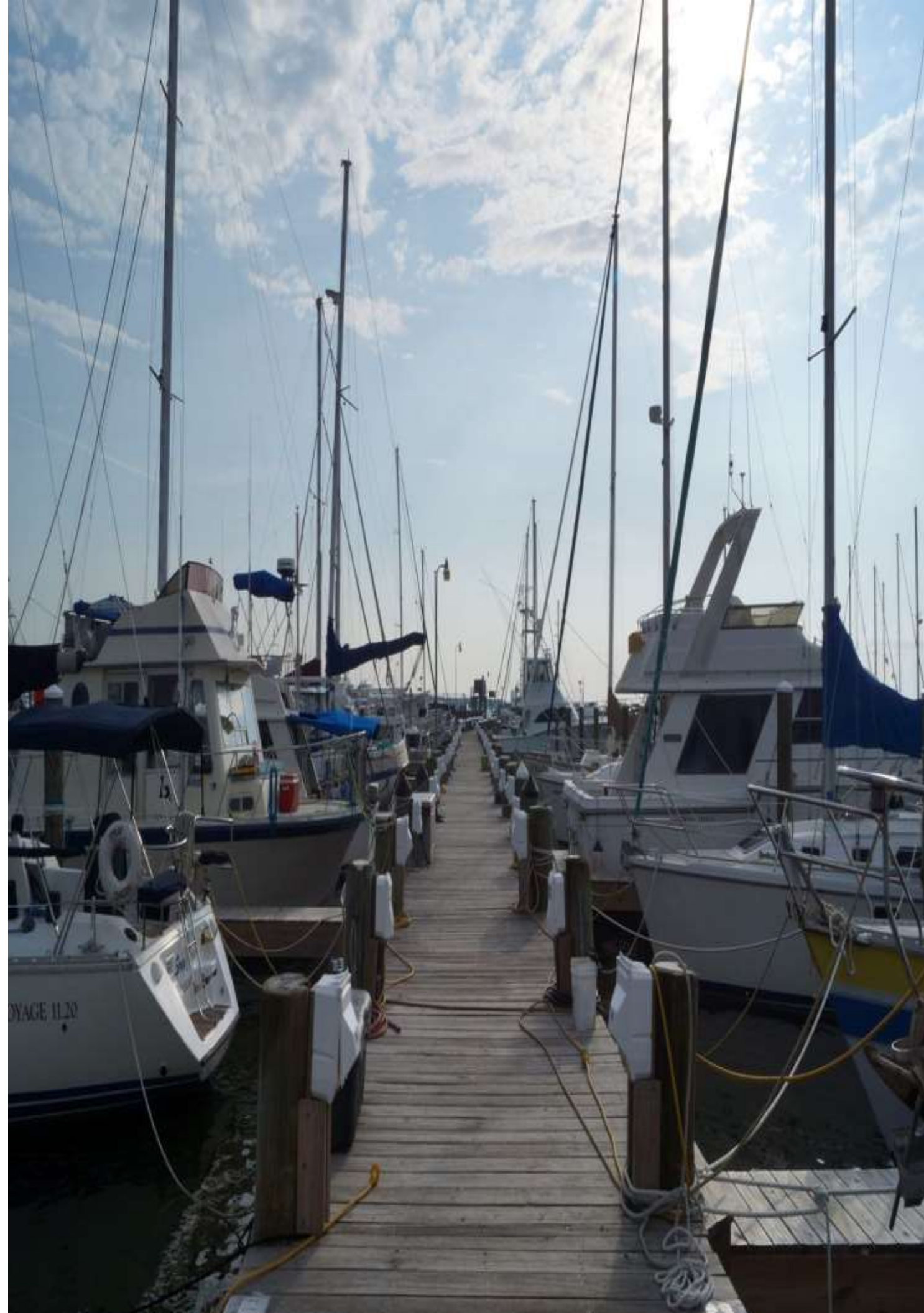
**Live Aboards \$50.00 Utilities**  
\$50.00 per AC/month

50 Amp Services are through Mississippi Power and utilities rate still is applied. All Taxed at 7%

Daily Transient Rate \$1.00 per foot up to five nights after five days see Harbor Master for discount.

## ON-SITE AMENITIES

- Wireless Internet
- Fuel Dock/Operational Pump Out
- Gas/Diesel/Propane
- Finger Piers for Boat Slips
- Fish Cleaning Tables
- Fishing Piers
- Fishing Supply Store
- Handicap Accessible
- Bait Shop
- Bathhouse with Showers/Laundry
- Abundant Fish & Wildlife
- 30/50/100 AMP Electric
- Gulfport Yacht Association Yacht Club



## CONTACT & INFO

**Reservations & Harbormaster:**  
(228) 863-4795 or (228) 697-1403

**Address:** 720 South Cleveland Avenue, P. O. Box 929, Long Beach, MS 39560

**Radio Contact:** VHF Channel 16 or 8

**Bait Shop:** The Tackle Box  
(228) 248-FISH

**Office hours:** 24 Hours, 7 days per week

**Latitude** 30° 20' 39" N

**Longitude** -89° 8' 34" W

**Arrival Depth** 8 ft (M/LT)

**Transient Dock** 8 ft (M/LT)

**Fuel Dock** 8 ft (M/LT)

**LOA Max** 70

**Beam Max** 19

## MEET THE CREW

**Bill Angley** – Harbormaster

Phone: (228) 863-4795 or (228) 697-1403

Email: [harbor@cityoflongbeachms.com](mailto:harbor@cityoflongbeachms.com)



## MARINE SERVICES

### MARINE SERVICES:

Bill Holland Master Boat Builder-  
(228) 861-5313

Rebel Boat Yard  
(228) 861-5313

Bay Marine Boat Yard  
(228) 432-2992

### RETAIL:

Heald Marine- (228) 863-8289

West Marine- (228) 863-8289

Mary Walker Marine- (228) 497-3141

Ken's Marine & Hardware- (228) 864-5545

Seaway Marine- (228) 604-4600

## NEARBY ATTRACTIONS

### RESTAURANTS & COFFEE HOUSES:

Steve's Marina Restaurant

Cajun Crawfish Hut

Juan Tequila's

Harbor View Cafe

Bull's Restaurant

Darwell's Café

Bankhouse Coffee

Lil' Rays Restaurant

Friendly City Yogurt

On a Roll Sushi

[Melissa's Specialty Cakes](#)

Nick's Gyros Philly Cheese

Assorted Fast Food Places including:

McDonald's | Burger King | Waffle House

### BARS:

[Steve's Marina Restaurant](#)

[Juan Tequila's](#)

[Harbor View Cafe](#)

[Bull's Restaurant](#)

[Eagle Island Daiquiri Bar & Grill](#)

### FAMILY ACTIVITIES & ATTRACTIONS:

Long Beach Yacht Club (GYA)

Picnic Pavilion

Tropical Treats- Sno Cones

[Kewl Kites](#)

[Kelinci Day Spa & Boutique](#)

[Past Perfect Antiques](#)

Free Parking Downtown

Local Farmers Market (JLB Levens Builders

Parking Lot)

Long Beach Public Library

Harper McCaughan Town

Green & Outdoor Amphitheater

Kid's Splash Pad

Public Beach Access

Bicycle Friendly



## IMPORTANT NUMBERS

### EMERGENCIES:

Ambulance / Police / Fire: 911  
Coast Guard Emergency: (228) 868-8771

### ANIMAL EMERGENCIES:

Animal Care Hospital (662) 832-1834  
Animal General Hospital (228) 868-3386

### HOSPITALS / URGENT CARE CLINICS:

Urgent Care Inc. (228) 864-0643  
Coast Family Physicians (228) 863-6883  
Memorial Hospital- Gulfport (228) 867-4000

### PUBLIC TRANSPORTATION:

Coast Transit Authority:  
<http://coasttransit.com/>

### TAXI/LIMO:

Aces Taxi Service, LLC (228) 257-4702

### GROCERYSTORES/PHARMACIES:

Walgreens (228) 575-3497  
Winn Dixie (228) 863-8680  
Long Beach Drugs, LLC (228) 822-9868

### GROCERYSTORES/PHARMACIES

Baccus Beverages (228) 868-2965  
Captain Joe's Wine & Liquor (228) 863-6667  
Rock Bottom Wine & Spirits (228) 216-6401  
Gold Nugget Package Store (228) 864-7863

### PORT OFFICES:

US Coast Guard Non-emergency (228) 868-8771  
Harbor Office (228) 863-4795 or (228) 697-1403

### BANKS:

Hancock Bank (228) 868-4760  
The Peoples Bank (228) 435-7902  
Regions Bank (228) 867-5491  
First National (228) 868-5428

### CAR RENTAL:

Enterprise Rent a Car (228) 865-0087  
Priceless Van & Truck Rental (228) 864-8647  
Goodyear Tire Shop (228) 864-3360

### POSTAL SERVICES:

US Postal Service (228) 868-5419  
FedEx (228) 868-5419  
UPS Store (228) 868-5419

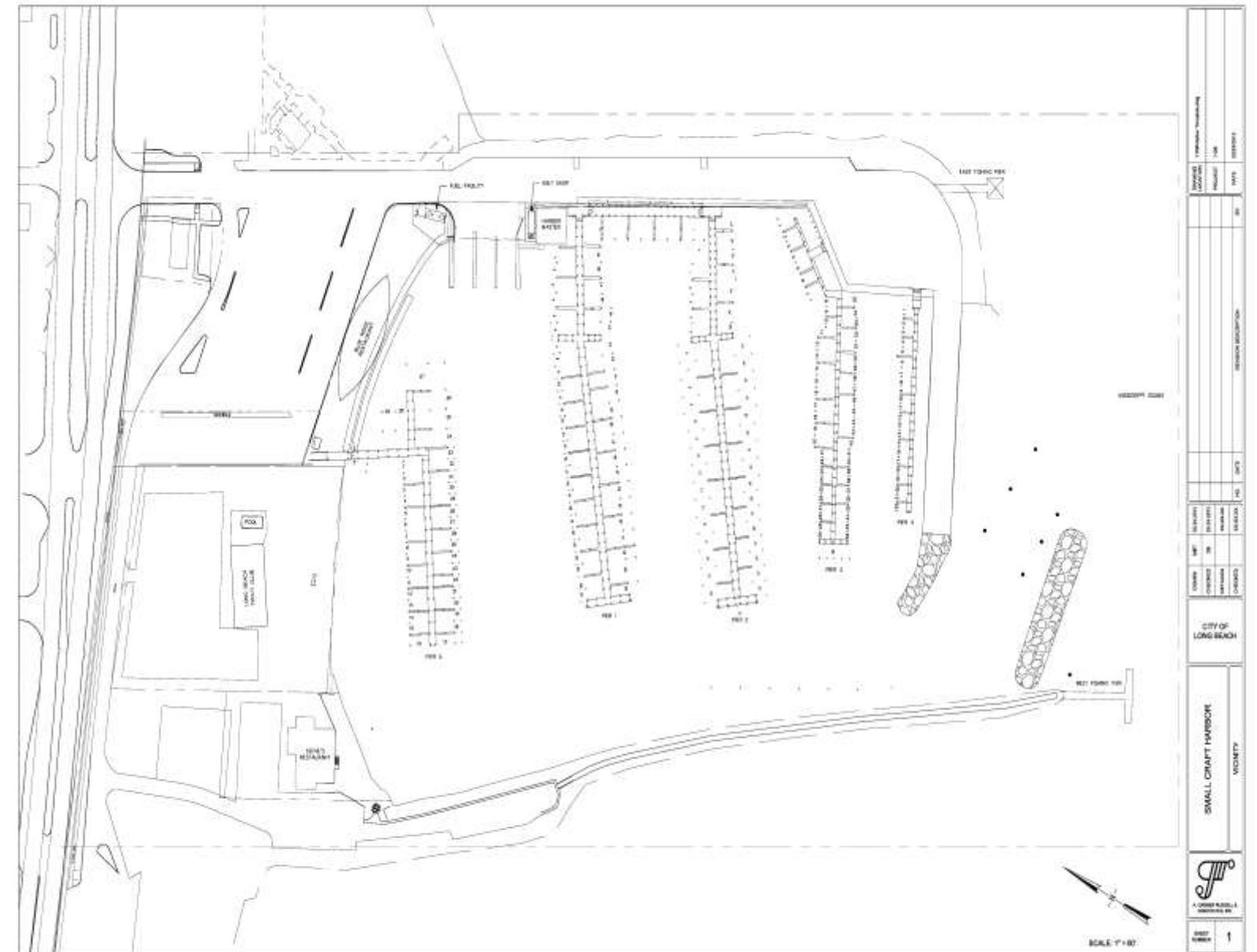
### BARBER SHOPS

Long Beach Barber Shop (228) 861-4657  
Cut Mania (228) 669-5424  
Ray's Barber Shop (228) 864-5144

### LAUNDRY SERVICES

Exclusive Cleaners (228) 863-5226  
Mien's Alterations & Tailoring (228) 865-9652

## MARINA MAP





# LIST OF CHARTERS

## FISHING CHARTERS:

### [9-ball Fishing Charters](#)

Capt. Barry DeShamp- (800) 726-0919

### [Camlo Fishing Charters](#)

Capt. Rick Davis- (228) 669-7040

### [Impulsive Fishing Charters](#)

Capt. Scott Simpson- (228) 669-6204

### [Fishing Frenzy Charters](#)

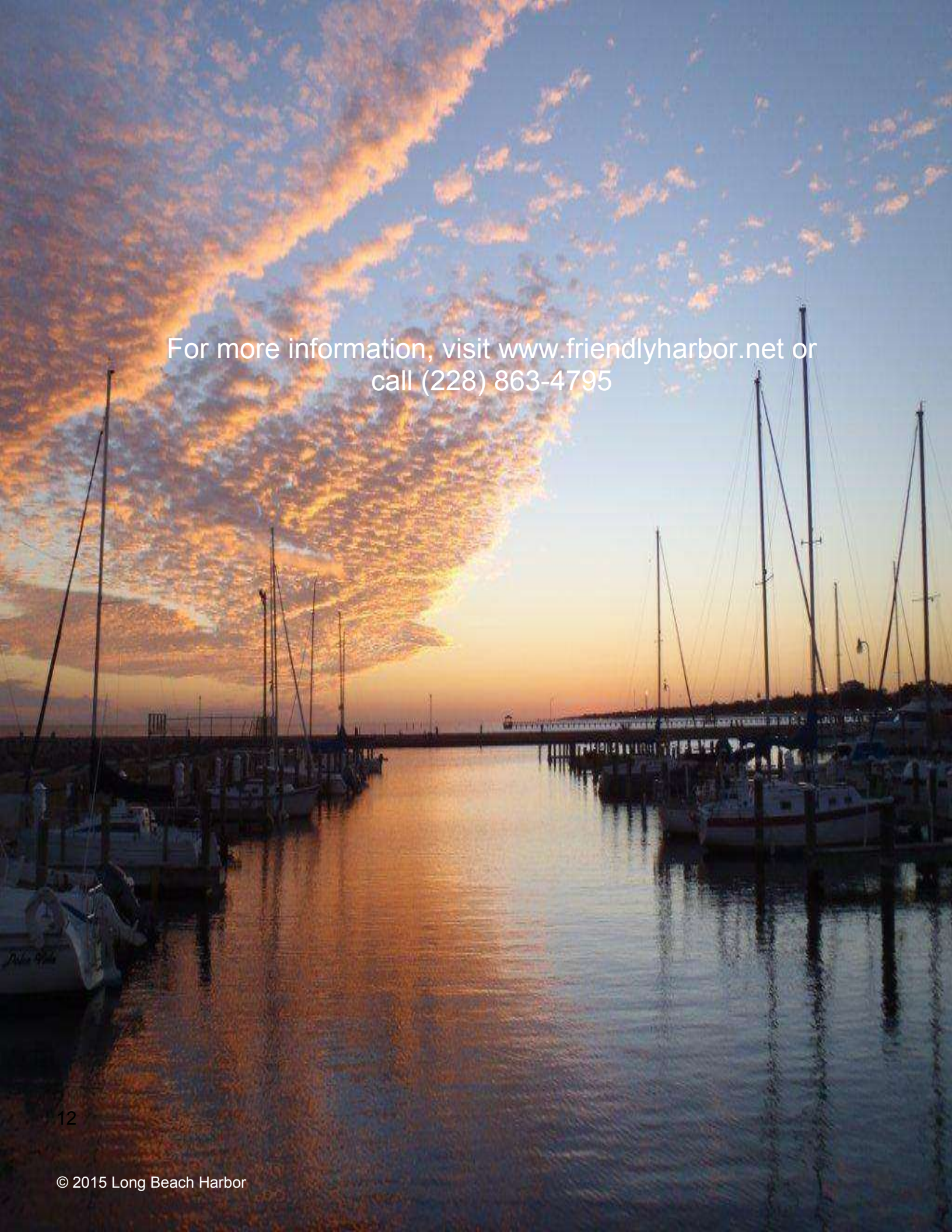
Capt. Barney Hill- 1-800-Fishy88

### [Still Water Fishing Charters](#)

Capt. Jeremy McHugh- (228) 697-9002







For more information, visit [www.friendlyharbor.net](http://www.friendlyharbor.net) or  
call (228) 863-4795